

# Turtle scoop



WINTER 2003

A Publication of *The Painted Turtle; A Hole in the Wall Gang Camp*

## Founders

Page and Lou Adler  
The Herb Alpert Foundation  
Shelly and Larry Brown  
Gil Friesen  
Jami Gertz and Tony Ressler  
Martha and Bruce Karsh  
Nancy and Howard Marks  
Sue and Richard Masson  
Ann and Jerry Moss  
Paul Newman

## Board of Directors

Page Adler  
Lou Adler  
Larry Brown  
Mary Brown  
Shelly Brown  
Melanie Cook  
Dr. Lorry Frankel  
Gil Friesen  
Jami Gertz  
John Hotchkis  
Bruce Karsh  
Martha Karsh  
Nancy Marks  
Sue Masson  
John Miller  
Janet Crown Peterson  
Tony Ressler  
Gene Rosenfeld  
Dr. Cynthia Telles

## Staff

Joe Glorfield  
CEO  
Wendy Cook  
Medical Director  
James F. Cook  
Director of Operations  
Nickie Reese  
Camp Director  
Beth Vandenbogaart  
Nursing Director  
Kristi Manning  
Development  
Tina Beck  
Volunteer Director  
Jennifer Wegner  
Office Manager  
Liz Lee  
Controllor

**EXCLUSIVE!**  
The World of  
NICK ADAMS  
Photos



## Construction Begins

We have started construction! Check out the live web cam on our website [www.thepaintedturtle.org](http://www.thepaintedturtle.org) to follow our progress.

It is a wonderful feeling to witness the culmination of our three-year design and permitting process and watch The Painted Turtle finally take shape. Thank you for your support, as we would not be here without you!

Demolition of the old RV-park buildings is now complete. Large-scale grading

operations are underway. After grading, foundations will be poured and utilities will be laid — we just learned that the electric company granted our request to bury all power and phone lines. That means that campers and families who experience The Painted Turtle will look about and see trees and hills unobstructed by unsightly telephone and power poles.

Please call James F. Cook in our office if you would like further information or a tour of the construction site.

## *A letter from the CEO...*

There is nothing to equal the wonder and joy of creating something new and fresh – of bringing life to something from nothing. Now imagine that “something” being a place like The Painted Turtle – an oasis in the lives of children who have been robbed of a good part of their childhood; a place where lives are changed for the better...forever.

You should feel a sense of accomplishment; and an important part of the good feeling and satisfaction brought forth by helping others in need. Without the support of you and the thousands of others committed to seeing The Painted Turtle open its doors to serve seriously ill children and their families year-round, none of this would be possible.

Our nation is blessed to count philanthropy among the basic tenets of citizenship. Helping others in need is as much a part of the fabric of this country as is voting or a belief in freedom. Your continued support of The Painted Turtle will allow us to provide programs for children that restore their sense of self-worth, hope, and desire to be well and live a full, rich life; and equip them with practical self-care skills that foster independence and self-esteem.

We also understand that families undergo tremendous stress and emotional trauma from the impact of chronic illness and that siblings are often pushed to the side and confused by their own conflicting feelings of fear, anger and guilt – to that end, family weekends designed to meet the psycho-educational, support and respite needs of the care givers and brother and sisters of our campers will be offered during the non-summer months.

Thank you for being such an integral part of this extraordinary journey. I hope you enjoy our first issue of *Turtle Scoop*.

*Joe Glorfield*

# The World Of Nick Adams



*Cast of The World of Nick Adams*

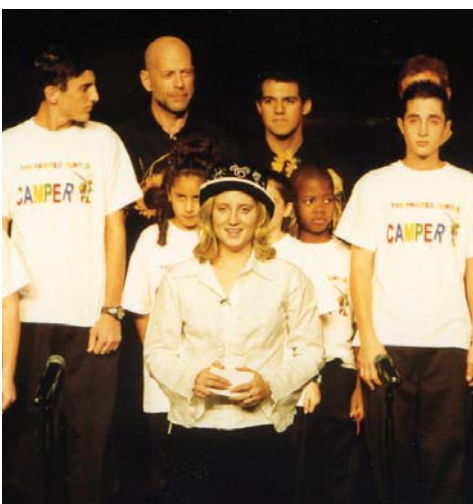
On Monday November 4th at The Kodak Theater in Hollywood, California, an extraordinary cast of celebrities gathered together to benefit The Painted Turtle and the entire Association of Hole in the Wall Gang Camps. *The World of Nick Adams*, based on Ernest Hemingway short stories

dramatized by A.E. Hotchner and set to the music of Aaron Copeland, was performed on stage by Warren Beatty, Annette Bening, Matt Damon, Brian Dennehy, Danny DeVito, Danny Glover, Tom Hanks, Goldie Hawn, Kevin Kline, Paul Newman, Jack Nicholson, Chris O'Donnell,

Edward James Olmos, Julia Roberts, Mena Suvari, Bruce Willis and Joanne Woodward. The performance was staged by Gordon Davidson, produced by Lou Adler and Kevin Duncan with the orchestra conducted by Miguel Harth-Bedoya.

Nick Adams, the popular protagonist of over 30 Hemingway stories, is the semi-autobiographical 19-year-old who leaves home seeking adventure. He enlists as a World War I ambulance driver in the Italian army, where he is traumatically wounded. After being rehabilitated and returning to action, he relives events that have led him to his moment of truth, and, having faced them, comes to grips with his mortality and destiny.

After the reading, 27 future Painted Turtle campers took the stage with Carole King to perform *Hope*, a song written by Carole King and A.E. Hotchner. The event benefited The Association of the Hole in the Wall Gang Camps, an organization comprised of eight internationally acclaimed medical specialty camps co-founded by Paul Newman, with a particular focus on The Painted Turtle, and was our first effort to generate considerable, broad awareness for the camp.



Former camper Amanda speaks at Nick Adams

## Medical Conference

The first Association of HITWG Camps Medical Conference was held over a three-day period, September 27–29, hosted by The Barretstown Gang Camp in Ireland. This gathering represented a milestone for our family of camps, bringing together 24 enthusiastic medical professionals representing every Hole in the Wall Gang Camp (HITWG). The group exchanged medical protocols, targeted key universal issues and discussed significant topics of common concern in an informative, useful and fun environment!

A pre-conference questionnaire helped to formulate a 27 page agenda. Fruitful conversations and newly formed professional relationships demonstrated the significant impact that face-to-face gatherings have. The knowledge, experience, wisdom and willingness to share information and experiences were invaluable in maintaining the high standards to which HITWG Camps adhere. The group unanimously agreed to communicate on a regular basis through semi-annual medical conference calls and medical camp personnel exchange visits.

## Special Events

We would like to thank the following organizations for their hard work and support.

- Western Pacific Housing – Golf Tournament
- LAPD and Irwindale Speedway - LAPD Vs. Celebrities Drag Races
- Phi Kappa Tau – Monte Carlo Night at UC Fullerton
- TREE PEOPLE - The Painted Turtle Tree Plantings

**W**e are delighted to announce that we have hired our Camp Director, Nickie Reese, and our Nursing Director, Beth Vandenberg. They bring so much to The Painted Turtle and are already creating exceptional program ideas and plans.

Now that construction is underway, children and families will be coming to experience The Painted Turtle before we know it! Over the next 12–18 months, we will be gathering all of our medical supplies, setting up the Well Shell, and recruiting doctors, nurses and volunteers to help care for our campers and their families. We will also be researching and creating innovative family programs and designing our extraordinary summer camp program for 2004. We look forward to working with all of our Partners:

- American Lung Association of LA County
- Camp Del Corazon, Inc.
- Hemophilia Foundation of Southern California
- National Kidney Foundation of Southern California
- Sickle Cell Disease Foundation of California
- Crohn's and Colitis Foundation of America

Together, we will bring over 1,000 children to The Painted Turtle for our first summer in 2004 and provide exceptional programs that will provide our campers with a burst of childhood adventure and a new sense of independence and freedom. As the Medical Director, I look forward to witnessing the life-changing impact that the camp experience will have on these amazing young children. Many will become more medically compliant, miss fewer days of school, and show physical signs of healing as a result of their time at The Painted Turtle.

We cannot wait for our first campers!

Dr. Wendy Cook  
Medical Director

**medical / program**

update

Words and Music  
Carole King and A.E. Hotchner

*It's a little word you may have heard  
A little word of mine  
Sweeter than the honey rose  
That grows upon the vine  
It's as small a word as a humming bird  
But bigger than the sky  
Soaring up into the clouds  
It teaches us to fly...*

# Hope

**Chorus**

*The word is hope  
Light as air, you don't care  
You can cope if you have...hope  
You may be down  
Things are bleak, you can't speak  
Don't you frown, you'll come around  
'Cause there is hope*

*Hope is a big balloon  
That'll carry you to the moon  
Lift up your chin, it's easy to grin  
Only a dope would not have hope*

*Hope is a thing with feathers  
Hope is a ray of sun  
Hope doesn't mind bad weather  
Hope means you've just begun  
A word that's small, binds us all  
You won't fall, catch a rope  
And you can be all you want to be  
With hope...with hope...with hope...with hope!*

**Chorus**

*The word is hope  
Light as air, you don't care  
You can cope if you have...hope  
You may be down  
Things are bleak, you can't speak  
Don't you frown, you'll come around  
If you feel you're falling down the slope  
Just look in your horoscope  
And you'll find hope...hope...hope!*



## Tree Planting

Special thanks to the folks from TREE PEOPLE and all those who came out to help us plant trees on October 12th. It was a beautiful day to be outside digging holes, planting trees and getting them off to a good start with a little watering. Stay tuned for another chance to help nature next Spring.



*Beth Vandenberg, Nursing Director and a future camper help plant a tree*

## Introducing...

*Nickie Reese  
Camp Director*

I am originally from San Angelo, Texas, but have spent the last 10 years in Boston and San Francisco, and am now ready to call the beautiful world of Southern California home! I hold a Bachelor's degree in Psychology from Clark University and a Master's degree in Social Work from Simmons College. I have practiced as a therapist in various settings including hospitals, a community health organization serving the mentally ill, homeless adult centers, a private boarding school, and most recently, a day treatment school serving emotionally

disturbed children and adolescents. Over the last five years, I have been able to work and volunteer at The Hole in the Wall Gang Camp in Connecticut; doing everything from directing the Equestrian Program, to being a Cabin Counselor and Unit Leader... and always honored to be a part of camp in any way I can. I love children and am consistently amazed by their ability to create life and magic through both pain and joy. Over the

years, I have seen first-hand, camp as a catalyst to help children find and create magic in themselves, their families, the staff and certainly in me. I am thrilled to be a part of The Painted Turtle family and cannot wait to get started!

*Beth Vandenberg,  
Nursing Director*

I am delighted to be onboard as the Nursing Director for The Painted Turtle. I grew up on a farm in a rural snow belt in Canada. Happily, I moved to Toronto (cold, but less snow!) where I trained and began my nursing career. I have had the privilege of being a clinical nurse for the past 18 years in various pediatric critical care specialty areas, particularly in heart

and liver disease. I have been fortunate to fulfill my wanderlust for new places (and desire to stay warm) by working in various hospitals throughout the country and abroad (Florida, California, and Saudi Arabia). I have been living and working in the Los Angeles area the past eight years at UCLA Medical Center where I have come to understand the great need and importance for a family care center in California, such as The Painted Turtle. As a pediatric liver transplant coordinator, I discovered there were few opportunities for these children to experience the magic of camp. Then, I met The Painted Turtle and I knew that I had to be a part of this amazing group and share in the incredible process of helping bring it to life. I cannot think of anything more fulfilling than being involved in a year round, life-changing environment for children and their families. It is an honor to be part of the team!

## Fundraising

As you might imagine, 2002 has presented its fair share of fundraising challenges. We have had success though and count many irons in the fire that should be concluded by the end of the year.

We continue to work toward the completion of our capital campaign, and expect to pass the two-thirds mark this year.

As we enter our last year of operation prior to camp being open, we are beginning to transition from a small capital fundraising entity to a larger annual fundraising organization. That said, we have hired two new development staff members: Kristi Manning joins us from the STARBRIGHT Foundation and will focus on corporate sponsorships, partnerships and regional advisory boards as they relate to fundraising; Nickie Reese, hired as our Camp Director, will manage foundation grant writing until her program responsibilities take hold next spring.

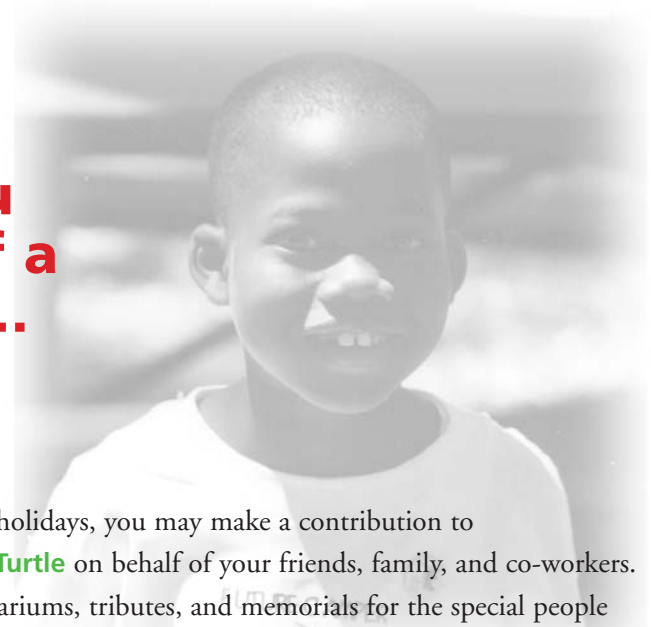
## *Founding Hospitals*

Cedars-Sinai Medical Center  
Children's Hospital and Health Center, San Diego  
Children's Hospital, Los Angeles  
Children's Hospital Central California  
Children's Hospital Oakland  
Children's Hospital of Orange County  
Harbor-UCLA Medical Center  
King/Drew Medical Center  
Loma Linda University Children's Hospital  
Los Angeles County and University of Southern California  
Medical Center Women's and Children's Hospital  
Lucile Packard Children's Hospital at Stanford  
Mattel Children's Hospital at UCLA  
Miller Children's Hospital at Long Beach  
University of California Davis Medical Center  
University of California at Irvine Medical Center  
University of California at San Diego Medical Center  
University of California at San Francisco Children's  
Hospital

## *Partner Organizations*

American Lung Association of Los Angeles County  
CHAMP Camp  
Crohn's and Colitis Foundation  
Camp Colitiscope  
Hemophilia Foundation of Southern California  
Camp Blood Brothers and Sisters  
National Kidney Foundation of Southern California  
Kidney Camp  
The Sickle Cell Disease Foundation of California  
Camp Crescent Moon  
Camp Del Corazón

**In lieu  
of a  
gift...**



In celebration of the holidays, you may make a contribution to

**The Painted Turtle** on behalf of your friends, family, and co-workers.

We also offer honorariums, tributes, and memorials for the special people in your life. What better gift to give than one that can change the life of a child.

For more information, please call The Painted Turtle office at 310-456-6350.